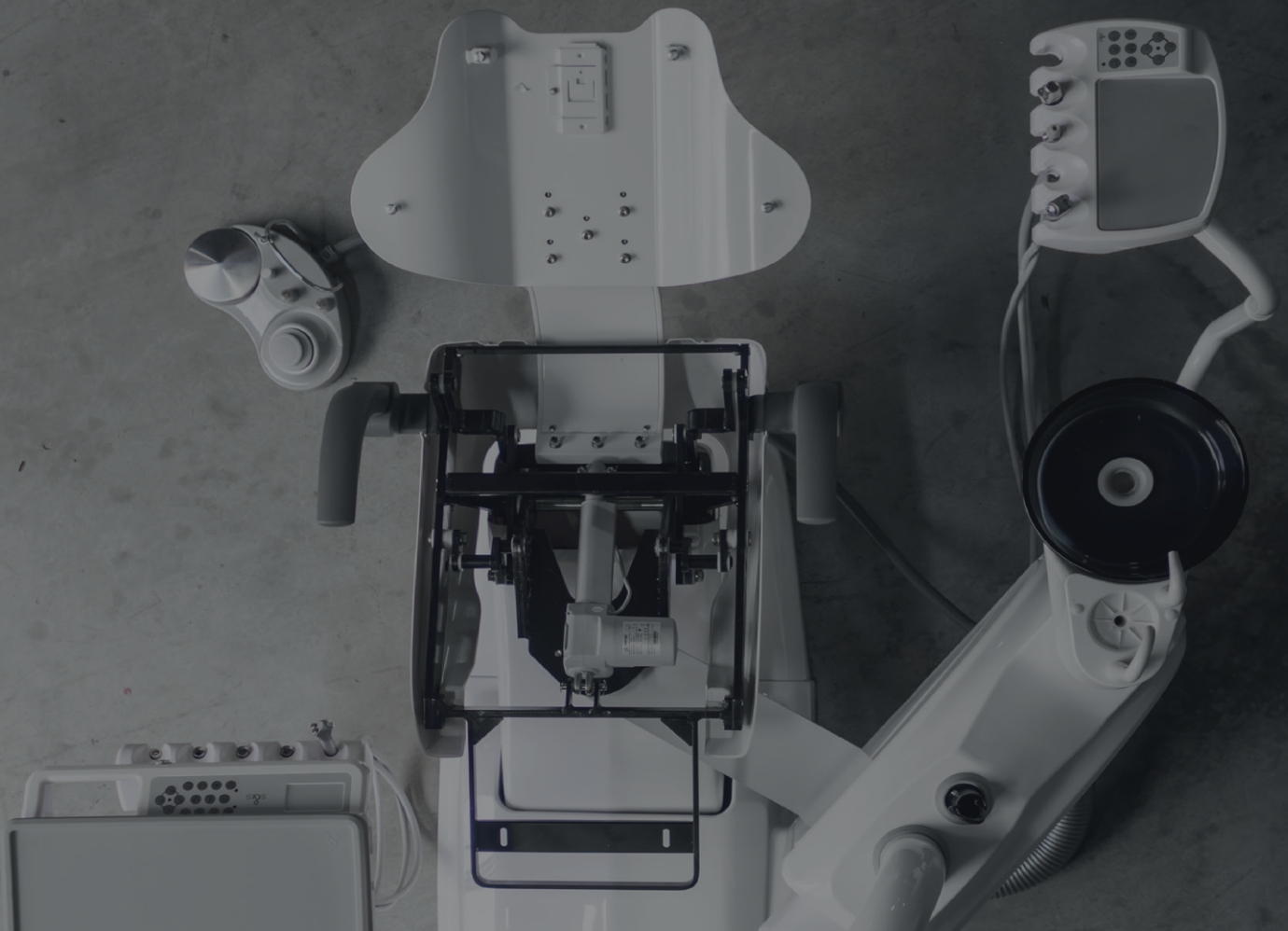


simple&smart
SURG
ERY 
shape your clinic



SIMPLE inside
less assistance need
easy installation
LESS electronics
for a **MORE RELIABLE UNIT**
That's why we are
simple&smart



ALL YOU NEED TO CREATE YOUR

PERFECT SURGERY ROOM ■

In a dental clinic the needs are multiple and the instrumentation must be perfectly functional and specifically designed for each individual use.

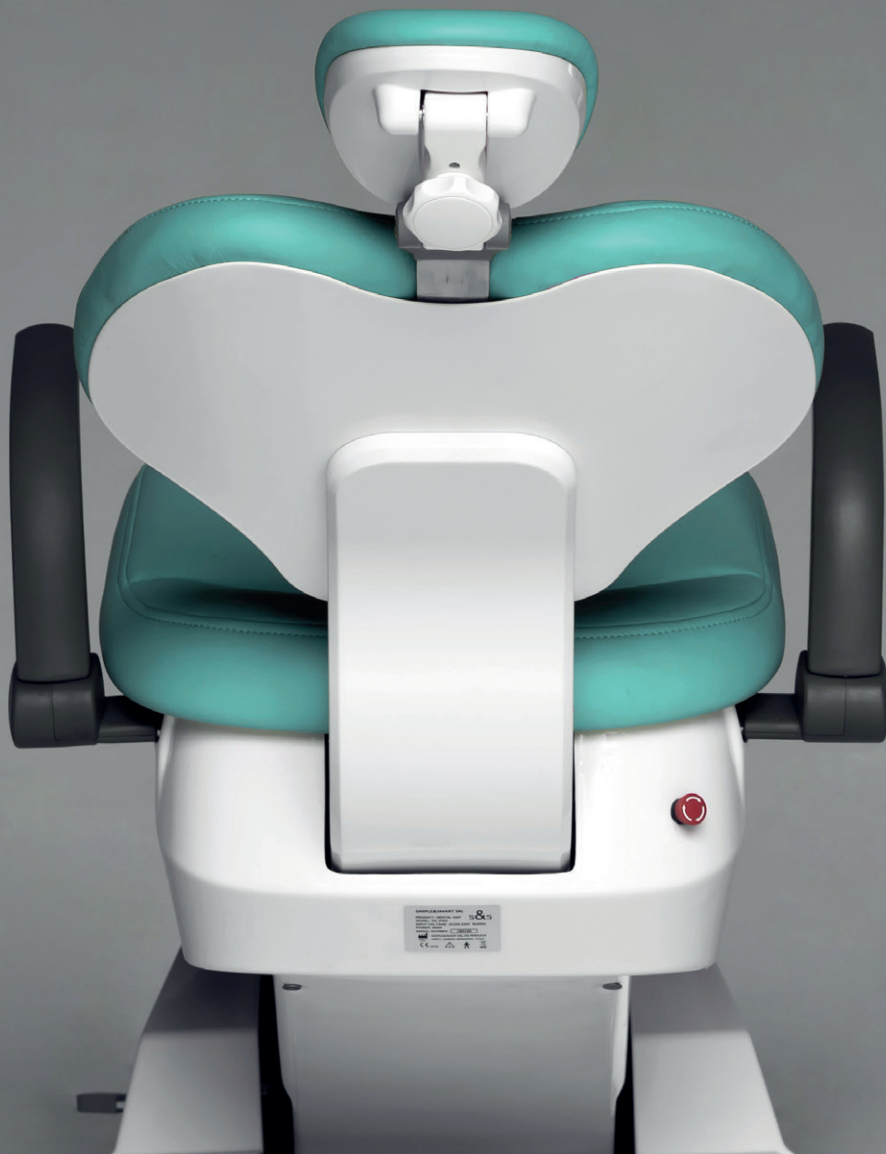
We have recently seen how it is increasingly required and important for professionals to provide an appropriate space for each type of work.

In particular, we have studied an optimal solution to organize the **SURGERY ROOM** or **FIRST VISIT ROOM**. A space where all the tools are at hand and the operating space must be as large as possible. Everything must be easily accessible and usable during the intervention phase without interruptions. Find out what we have thought to make your surgery/first visit room perfect.

**Choose your ideal configuration,
compose your room as you wish!**



1 STAND ALONE DENTAL CHAIR



STAND ALONE CHAIR

SS_ONE



Working in **12 o'clock position** will be easier with the **SS_ONE** dental chair.

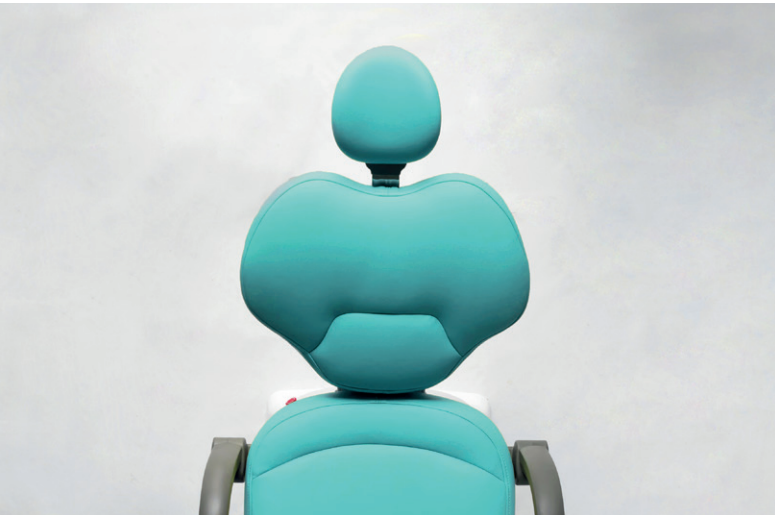
The **seat** and the **backrest** have been designed to fit perfectly to the knees of the dentist and allow the professional to get closer to the patient and reach a perfect and comfortable working position, while keeping

the comfort for the patient.

The flat shape of the **chair base** grants a wider movement of the seat. It has been designed to be thin and it allows the chair to reach a lower position, improving the comfort and the efficiency of your work.

STAND ALONE CHAIR

SS_KISS



The seat and the backrest of the **SS_KISS** have been designed to improve the comfort and the stability of the patient on the chair. The particular ergonomics allows the doctor to work in a more suitable position. Working in **3 o'clock** and **9 o'clock position** will be easier.

The structure of the backrest is in metal and it is very thin, in this way the doctor can get closer to the patient and have a better working position. The design of the **chair base** grants a wide movement of the seat that can reach a lower position.

CONF IGUR ATION



CONF IGUR ATION

The chair is **equipped** with



MULTIFUNCTIONAL PEDAL

to control the movement of the chair and the backrest position. It also allows to control the air and water supply to the instruments when the instrument cart is connected to the chair.

LEFT ARMREST

The left armrest is already provided with the chair. The right armrest is an option, you can add it to improve the comfort of the patient, or you can avoid to purchase it to make the entrance/exit of the patient easier. However, the armrest can easily rotate to grant the wider space possible while the patient seats onto the chair.



DIFFERENT UPHOLSTERIES

The upholstery can be supplied in:

- Standard **PU leather** - Made with high quality PU production process. Anti snatch fabric, can be easily cleaned and disinfected.
- **Fiber leather** with seams. Softer cushions to grant to your patient the greatest comfort during the intervention. The fiber leather is available in a standard range of 12 colors.
- The Fiber leather can also be **customized** in more than 200 different colors, or by requesting the embroidery of your clinic logo on the upholstery of the backrest. You can even decide to use any type of print or design for the upholstery of your dental chair (available both in the Fiber and PU leather). You can find more details at the dedicated section.

OPT ION ALS



OPTIONALS

instrument cart

suction units
operating lamps
media kits
handpieces
micromotors



The independent instrument cart allows you to have all the instruments you need for the intervention always at your side. Mounted on a cart with wheels, it can follow your movements easily leaving you all the necessary space in your operating area.

The instrument cart is equipped with

- **FIVE CORDON MODULES** on doctor tray:
 - 1 syringe with 3 functions
 - 1 WP scaler, EMS compatible with 5 tips included
 - 3 cordons midwest type (2 with optic fibre, 1 without optic fibre)
- **CONTROL PANEL**
- **X-RAY VIEWER**
- **PURE WATER SUPPLY SYSTEM**

On request, it can also be equipped with a wider fan-shaped tray as option and with the proper connection for electric micromotors.

OPTIONALS

instrument cart

- suction units
- operating lamps
- media kits
- handpieces
- micromotors

HOW TO CONNECT YOUR CART

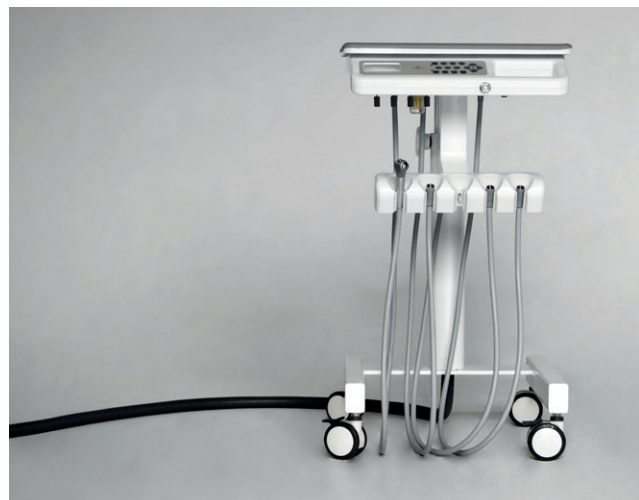
DIRECTLY TO THE DENTAL CHAIR



The instrument cart can be connected to the base of the dental chair, in this way you can use a single pedal to move the chair and control the air/water supply to the instruments.

CONNECTED TO ANOTHER SOURCE

You can connect the cart to another source, for example to a pre-setted connection on a wall or on the floor. In this way you can choose exactly where to connect your cart. If not connected to the chair, the cart will be equipped with its own pedal to control the instruments. In case you want to install an electric micromotor, you can choose to have the FARO pedal. This pedal, with its smooth movement of the lever that manage the instruments functions, allows you to have an easier and more precise control of the micromotors' rotation.



OPTIONALS

instruments cart
suction units

operating lamps
media kits
handpieces
micromotors



CATTANI SUCTION CART

A range of suction carts specially designed by Cattani to satisfy all the possible requests about independent suction units. These carts give you the maximum flexibility during intervention.

CATTANI CANNULAS

The Cattani suction cannulas can also be installed on the wall or on the instrument cart, connecting them to centralized suction. This avoids having another cart inside the room but you have to consider the installation of a separate basin.



CONNECTED TO THE CHAIR

A third option is to have the water unit connected to the chair. The water unit is connected to the central suction machine and it is equipped with suction cannulas, spittoon and cup filling. This option is an advantage in terms of connection but a disadvantage for the loss of space around the chair, even if our water unit can rotate of 90° to allow the doctor to get closer to the patient.

OPTIONALS

instruments cart
suction units
operating lamps
media kits
handpieces
micromotors

Lighting is a fundamental part of a surgery room. Based on your needs, you can decide which type of lighting best suits your needs and decide the best way to install the lamp you prefer, to ensure **maximum flexibility** and **maximum comfort** during the operating phase.

ECO LED PEBBLE

Equipped with sensor for intensity regulation. The intensity of this lamp can reach 30.000 lux. Easy to clean and with a pleasant design, this lamp is the perfect example of excellent value for money.



LED LAMP EVA

High quality LED lamp - Illuminating power from 3.000 to 50.000 lux. You can select the ideal color temperature for dental practice: 5700K, 5000K, 4000K, and 2700K. The patented, unique, reflected-light optical design ensures a well-defined light spot, preventing glare for patients. Its 3D head rotation > 360° allows to illuminate every corner of the mouth.

Made by **FARO** - Italy



LED LAMP MAIA

High quality LED lamp, from 8.000 to 35.000 lux. Maia is the ideal choice for all dentists searching for a professional LED lamp, a reliable solution, long lasting and with high-level lighting performance at a competitive price. The accurate definition of the MAIA dental lamp luminous spot eliminates the risk of glare, safeguarding the eyes of patients and medical team.

Made by **FARO** - Italy

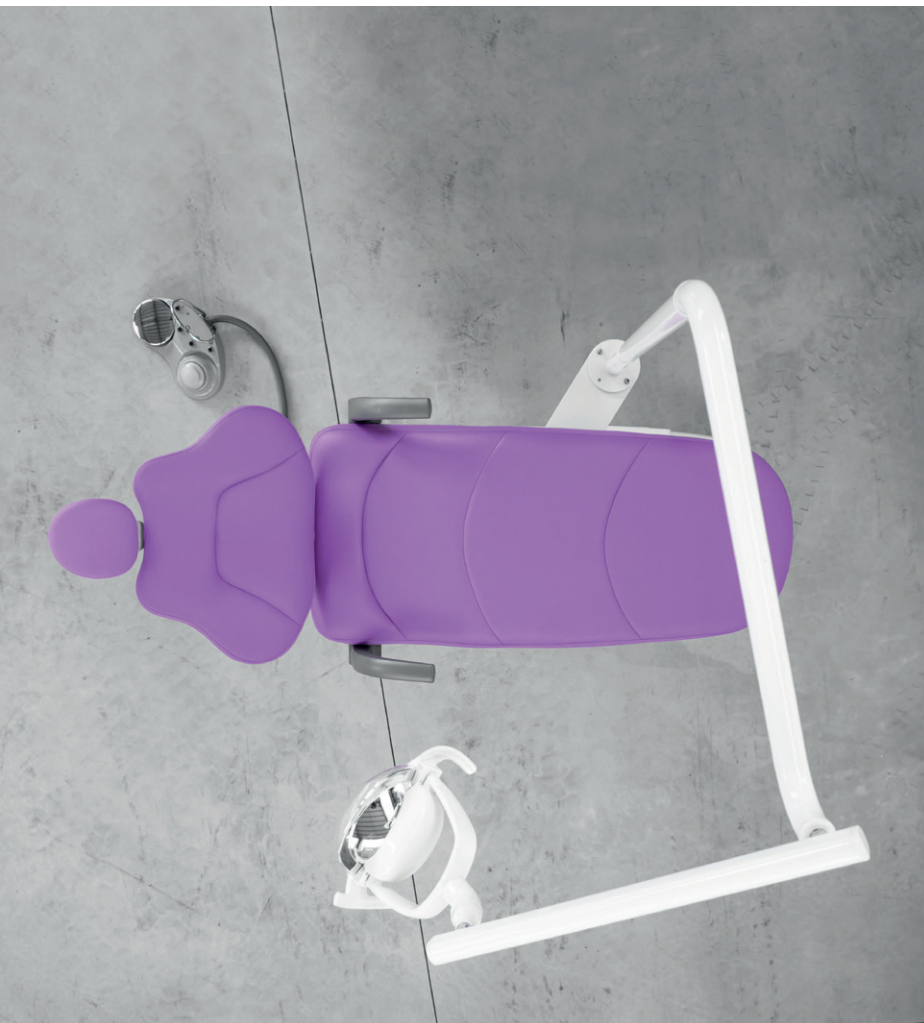


OPTIONALS

instruments cart
suction units
operating lamps
media kits
handpieces
micromotors

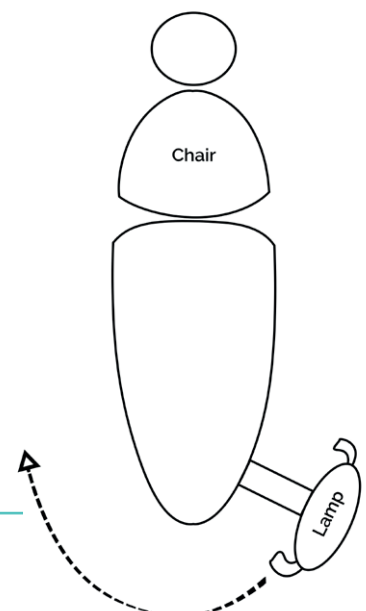
INSTALLATION TYPE 1

DIRECTLY ON THE DENTAL CHAIR



The first installation method is to connect the operating light **directly to the unit**. By means of a special plate placed at the base of the chair, it is possible to install any type of lamp directly on the chair. Thanks to this particular structure, the lamp can rotate from left to right with an easy and smooth movement to reach the position you prefer during intervention.

The lamp models available are those in our catalog, starting with the Pebble Led Lamp, up to the complete range of **FARO** and **G.COMM** lamps.



OPTIONALS

instruments cart

suction units

operating lamps

media kits

handpieces

micromotors

INSTALLATION TYPE 2



APPLICATION ON CEILING

Another possibility is to install the operating lamp (or more than one) on the ceiling. Our partner **FARO** has created a whole range of ceiling lamps to which you can add trays to keep everything you need close at hand and touch screen monitors to keep everything under control. The ceiling application allows **maximum flexibility in terms of space**. you will have all the light you need without giving up the space to move around the chair.



HIGH TECHNOLOGY at the RIGHT PRICE

Like the entire range of **S&S** products, **FARO** lamps perfectly represent our philosophy: **excellent quality at a competitive price**. FARO lamps guarantee perfect performance thanks to their reflected light optical design that guarantees an absolutely uniform and well-defined light spot, avoiding the risk of dazzling patients. With a very wide illuminance range (from 3,000 to 50,000 LUX), FARO lamps are suitable for all processes. FARO lamps are all equipped with **removable and autoclavable handles** and an **electronic board** that ensures perfect compatibility with any video acquisition system and diagnostic tools. With electronic lighting control, activated by joystick or sensor, they continuously adjust the light from maximum to minimum power, keeping the color temperature constant. The perfect synthesis between **efficiency and comfort** at your service.

OPTIONALS

instruments cart
suction units
operating lamps
media kits
handpieces
micromotors

ENDOSCOPE KIT

- **Monitor** 24 V, color, 15", with glass protection
- **Intraoral USB Camera:** Full HD resolution, auto focus and mouse, LED illumination - by simple&smart
- **Arms Set** for monitor installation

MONITOR and CAMERA are installed on the dental unit with a special pole set. The camera allows to save images on a PC or into the dock-station supplied with the device, thanks to its USB connection cable. This Full HD camera (1920 x 1080) is equipped with autofocus and mouse, LED illumination with 3 different intensity levels. The head of the camera can rotate 280°, this feature facilitates your job and reduces discomfort for the patient. The Endoscope KIT is the PERFECT SOLUTION to show to your patients your work in real time.



SUPERMEDIA KIT



- **Panel PC** Installed on the unit, touch screen, wireless mouse and keyboard.
- **USB Camera** Connected to the panel PC
Made by CARESTREAM - France
- **Arms Set** for monitor installation

PANEL PC and **CAMERA** can be installed also separately, but the BEST SOLUTION is to use them together. The PC is touch screen and it works as a normal computer. Internet connection, RVG system, endocamera and all management programs can be controlled directly from your operation site. The combination with the camera allows to get and save all images you need.

OPTIONALS

instruments cart
suction units
operating lamps
media kits
handpieces
micromotors



LUZZANI SYRINGE

Straight or curved
3 or 6 functions



TKD HIGH SPEED TURBINE

With or without light



TKD RAPID COUPLING FOR HIGH SPEED TURBINE

KAVO / Bien Air compatible



STRAIGHT

1:1

TKD

Without light



BLUE

1:1

TKD

With or without
light



RED

1:5

TKD

With or without
light



BLUE

1:5

W&H

With or without
light



RED

1:5

W&H

With or without
light

OPTIONALS

instruments cart
suction units
operating lamps
media kits
handpieces
micromotors



WOODPECKER SCALER

With light
EMS compatible
Satelec compatible on request



TKD SCALER TITANUS

With or without light
EMS compatible
Satelec compatible on request



WOODPECKER CURING LIGHT

With cable on assistant tray



TKD KIT MOON CURING LIGHT

6 curing programs, high-power LED light, straight or pistol position. Lamp with a @8mm optical fibre (@5mm optical fibre also available for higher output power).

OPTIONALS

instruments cart
suction units
operating lamps
media kits
handpieces
micromotors

The instrument tray can be equipped with **one or more micromotors**. Micromotors can be pneumatic or electric depending on the requirements of each customer. **All contrangles, from all brands, can be adapted on these two micromotors.**

TKD PNEUMATIC MICROMOTOR



Pneumatic micromotor without light, 20.000 rpm. Internal spray.

The pneumatic micromotor can be directly applied to the cordon without any control board. Speed can be controlled through pedal or manually on the handpiece.

TKD ELECTRIC MICROMOTOR

Definitive LED model.
With light, internal spray, brushless system, 40000 rpm.
If no control panel is selected, the speed of the micromotor is managed simply through the pedal. The revers control is manual. There is no digital torque control.



OPTIONALS

instruments cart
suction units
operating lamps
media kits
handpieces
micromotors

CONTROL PANELS FOR ELECTRIC MICROMOTORS

If you want to have a **greater control of the micromotor** you can choose between two control panels, analog or digital. Both panels can also control two electric micromotors.

TKD LCD DIGITAL DUOPAD

The digital panel allows you to control the speed, torque, rotation and light of the micromotor. The controls are digital and take place through the dedicated touch screen panel. With this solution it is not possible to have more memory usage



TKD ANALOGIC DUOPAD WITH BUTTONS

The analog panel allows the same controls as the digital one, but the analog duopad also provide the possibility of having more memory usage. The advantage of the analog system is the simplicity of selection with buttons.



OPT ION ALS

instruments cart
suction units
operating lamps
media kits
handpieces
micromotors

MICROMOTOR FOR IMPLANTOLOGY

All the option listed before can be installed onto the instrument tray. Beside this, we do not suggest to apply a micromotor for implantology onto the instrument tray. We think that the better option is to purchase a separate micromotor unit, specific for implantology. This will allow you to have several advantages. For example:

- **optimize costs:** since this is a tool that is usually quite expensive, an independent micromotor allows you to use it on different workstations
- **greater possibility of movement:** an independent micromotor can be moved and positioned in the best way according to the needs of the moment
- **better performances:** an independent micromotor, being specially designed for this purpose, is certainly more functional, efficient and safe than other solutions adapted to the unit.

On the market you can find several brands and models of independent micromotors for implantology. Here we give you an example.



OPTIONALS

instruments cart
suction units
operating lamps
media kits
handpieces
micromotors

W&H IMPLANTMED MICROMOTOR



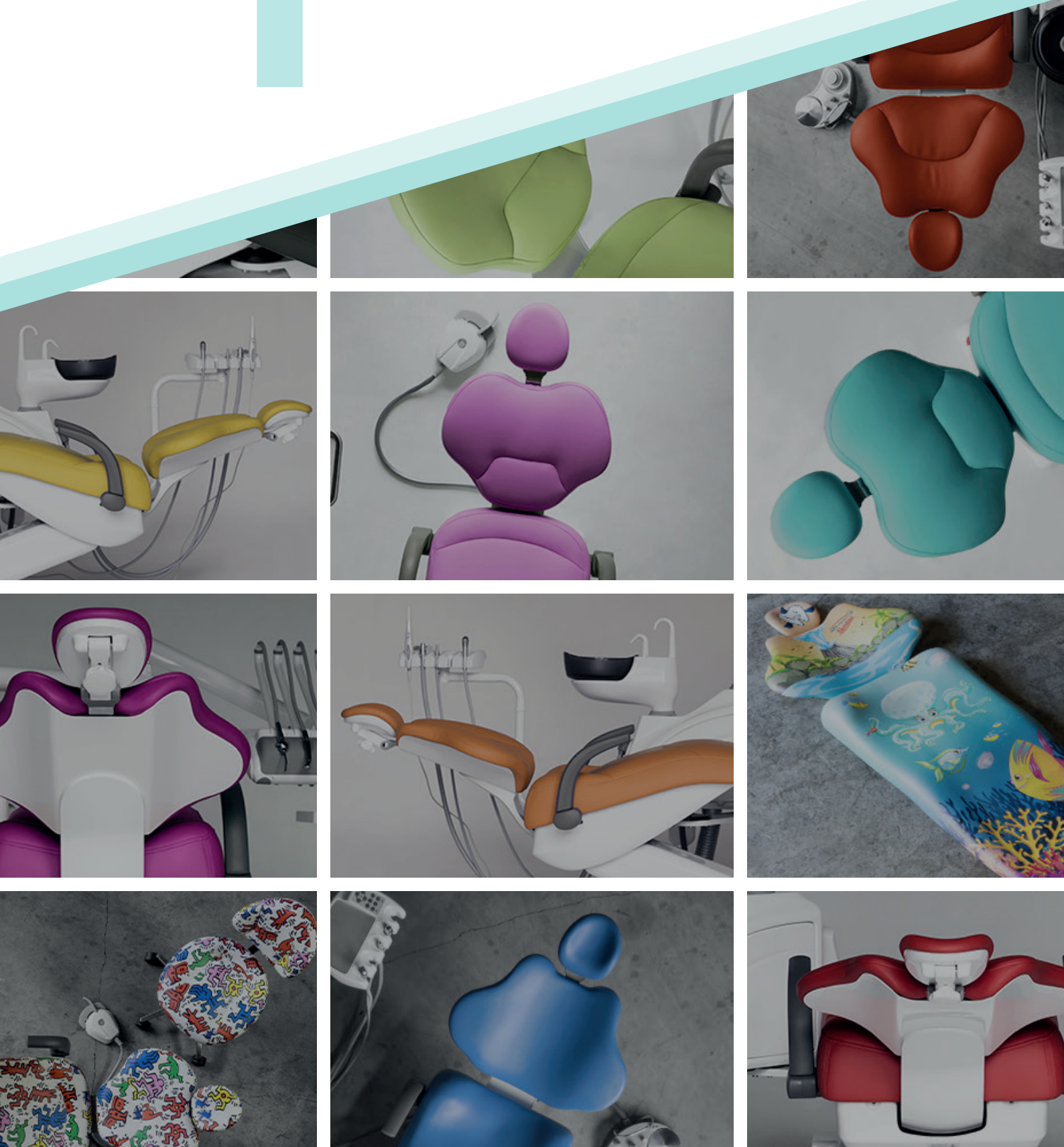
Technical features and maximum reliability make Implantmed a turning point in implantology.

Implantmed represents an innovative system thanks to: five programs for each phase of the implant, which can be customized and stored, integrated pump, multifunction foot control, motor and sterilizable cord.

The user interface is intuitive and the torque control safe, and the W&H Ostell ISQ module, available as an accessory, makes the measurement of implant stability.

Implantmed has a powerful and ultra-compact electric motor, a newly developed pump and wireless foot control.

4 COLOR YOUR CLINIC



COLOR YOUR CLINIC

IT'S A MATTER OF LEATHER

seams or no seams, that is the question!

Standard PU, standard Fiber Leather and more than 200 customized colors: S&S has the widest choice of upholstery you have ever seen!

The Pu standard polyurethane upholstery is available with no additional costs. The standard PU leather is seamless for an **easier cleaning procedure**. With a small additional cost you can select the elegant Fiber Leather upholstery, with seams to grant to your patients a **higher comfort**.

PU LEATHER



FIBER LEATHER

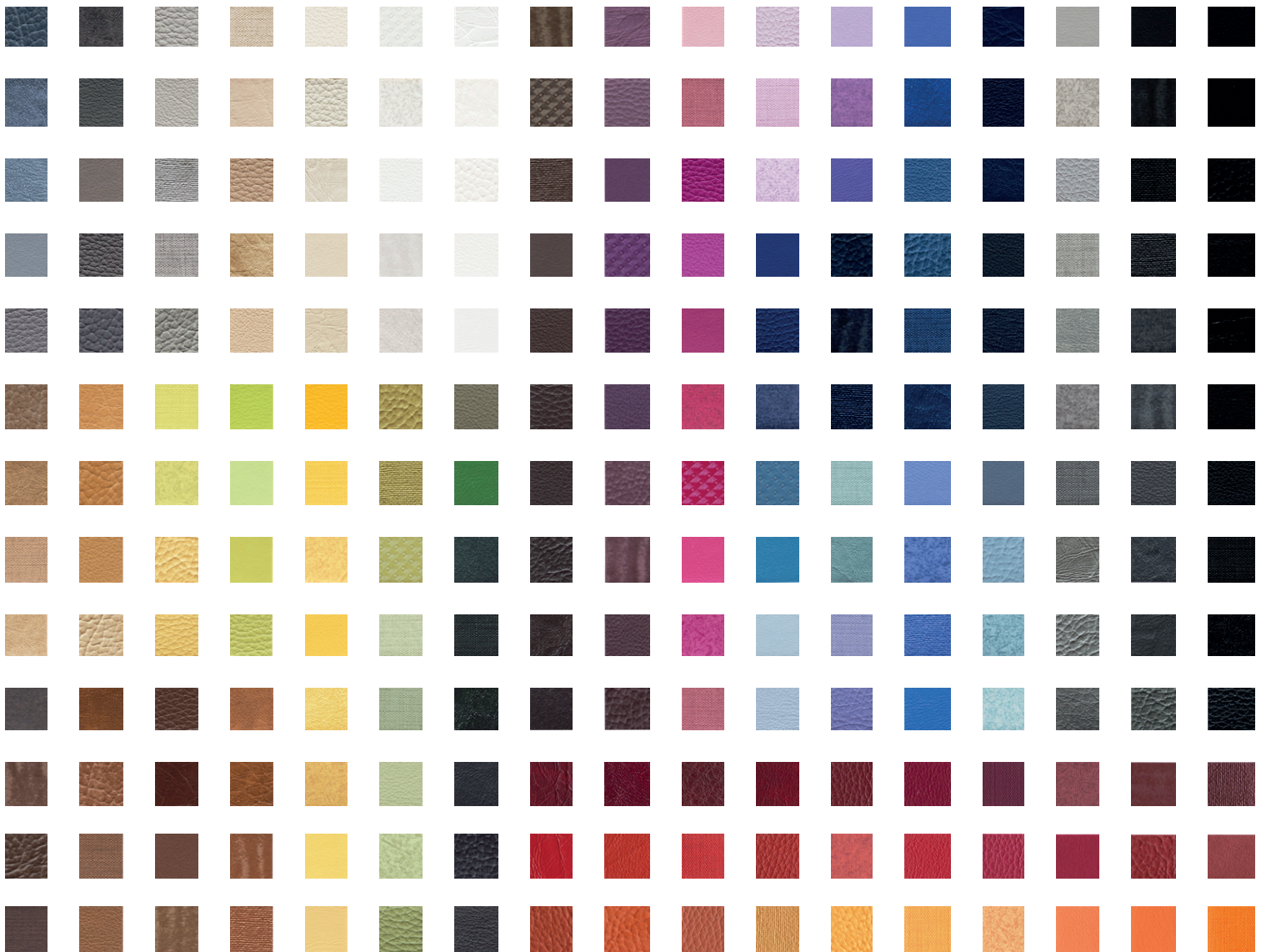


COLOR
YOUR
CLINIC

NO LIMITS

did you say Aqua Green?

CUSTOMIZED LEATHER



Just think about a color, we are sure you can find it in our range of customized colors! With a slightly higher additional cost, you have the possibility to choose from **more than 200 colors**. This kind of upholstery is **Fiber Leather with seams**. Do not set limits to your imagination, you can make your clinic unique!

Impossible not to find your favorite color!

5 COMPANY



COM
PA
NY

AT YOUR SERVICE



PRODUCTION

The production process is the heart of our company, and for this reason we follow every stage with particular care, starting from the choice of materials, paints and components, to assembly and final control. Each unit, in fact, is subjected to a careful double check, carried out by our specialized technicians, during assembly phase and before shipment.

Our **ISO 9001** and **ISO 13485** standards testify that these processes are actually carried out and respected.

STOCK

We want to be extremely **fast in deliveries**, so we always have in stock several units, in large part already assembled and ready to be configured according to our Customers needs. All the necessary parts and all the options are **available in stock** and we can complete the assembly of the unit and arrange the delivery in a few days.



SHIPMENT

The shipment can be arranged according to each customer's needs. We usually ship the unit in a **single wooden case**, but, if required, we can ship the unit in two separated boxes, in order to make the delivery to the clinics easier. The **two separated wooden cases** are smaller in size and less heavy, so the download from the truck is easy even without a lifter and the reduced dimensions allow an easy storage while waiting for the installation.

COM
PA
NY

ASSISTANCE

Always at your side

WARRANTY EXTENSION

The standard warranty on our dental units covers a period of **1 year** but, if you want, you can extend the warranty **up to 5 years**.

WATCH OUR VIDEOS

On our **website** and on our **YouTube** page you can find many videos of the unit, on its configuration, on the options available, tutorial videos for the installation, maintenance, sanitization, etc., in order to set up and take care of your chair in the best way possible.

www.simplesmart.it

We created this website to support our dealers and customers in the best way possible. You can have a complete overview on our company and our products, you can even configure your customized unit. Using our **configurator** you can receive a personalized quotation without any purchase obligation.

With Simple&Smart you can always find the best and simplest solution for your needs.

Follow our social media pages to discover more and to be updated on our news, products and events.

LIVE ASSISTANCE

WhatsApp number on request if you are our dealer.

We are **always at your disposal**. You just have to contact our live assistance department on Whatsapp. Our technical staff will assist your technicians to solve your problem in few minutes.

REPORTS ON FILES

Complete **PDF reports** are available to be sent by email. Detailed information for **problem solving** are explained in a specific manner on the bases of the problem you have indicated.



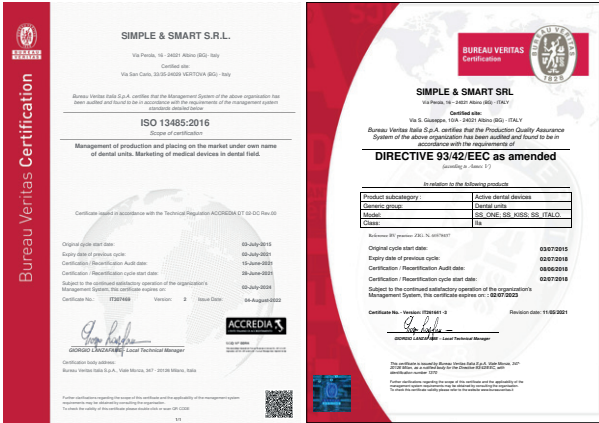


CERTIFICATES

we take it seriously

ISO & CE CERTIFICATES

Our dental units are Class IIa medical devices. The **EC Certificate** and **ISO 13485 Certificate** ensure that our products and procedures are compliant to the regulations in force and to the severe ISO standards. **These certifications guarantee the quality of our products and services.**



CERTIFIED TECHNICIANS



To ensure a perfect installation and a proper after sales assistance service, Simple&Smart certifies all the distributors' technicians, after attending a **specific training**. An Enabling Certificate is issued to the technician. All this, in order to **provide a safe and reliable product to the customers and a professional and precise technical support.**



Registered office: Via Perola 16, 24021 Albino, Bg - Italy

Headquarters: Via San Carlo 33/35, 24029 Vertova, Bg - Italy

Ph: +39 (0)35 5295636 | info@simplesmart.it | www.simplesmart.it

